

ATWOOD MAGAZINE

https://atwoodmagazine.com/kbfc-forest-claudette-music-interview-kobe-beef-feature/?expand_article=1

Instagram: [@atwoodmagazine](#)

Twitter: [@AtwoodMagazine](#)

Facebook: [@AtwoodMag](#)

“Australian alt-R&B artist Forest Claudette channels their vulnerability in their latest single “Kobe Beef,” a stunningly hypnotic meditation on their queer identity and internal truth with captivating, dynamic visuals to match.” - Atwood Magazine

Interviews, Music / February 16, 2024

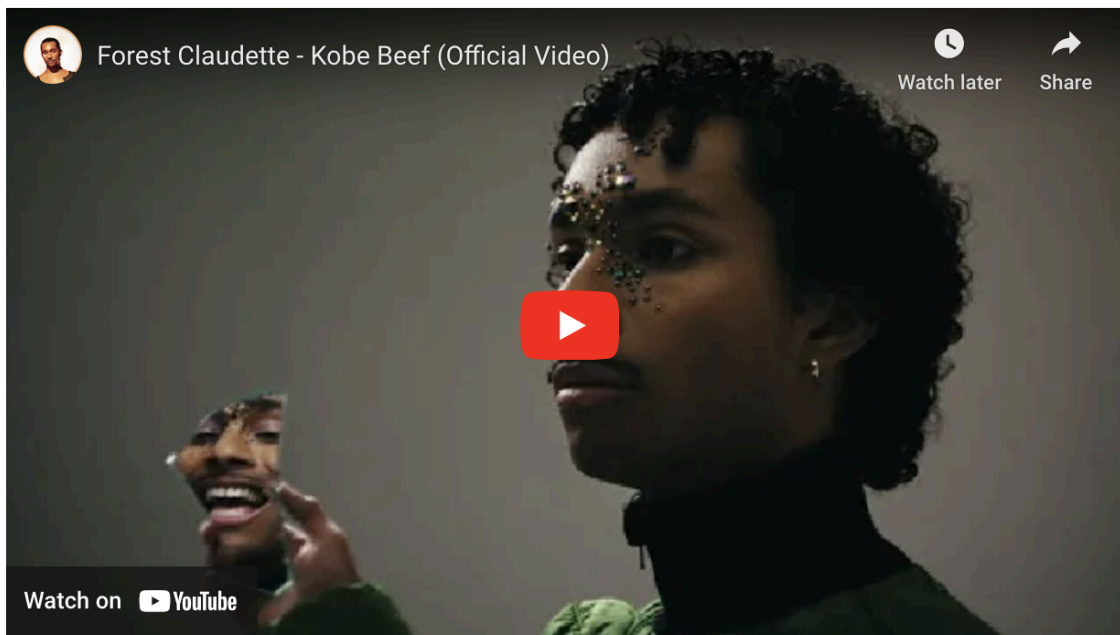
— “I’M TRYING TO COME OUT FROM WITHIN”: FOREST
CLAUDETTE CHANNELS VULNERABILITY & QUEER
IDENTITY INTO “KOBEE BEEF” —

by Nic Nichols



Australian alt-R&B artist Forest Claudette channels their vulnerability in their latest single "Kobe Beef," a stunningly hypnotic meditation on their queer identity and internal truth with captivating, dynamic visuals to match.

Stream: "Kobe Beef" - Forest Claudette



'Kobe Beef' is the first song about being non-binary, and it's really picking all of these moments of turbulence within myself and trying to capture the highs and the lows and all the questioning that goes on into figuring out something like that. Ultimately, it's a celebration.

Fresh off the heels of their critically acclaimed EP *Everything Was Green*, Australian alt-R&B artist Forest Claudette unveils their latest soulful single, "Kobe Beef." A vulnerable and hypnotic meditation on their queer identity and internal truth, the single flawlessly showcases Claudette's stunning lyricism and multifaceted approach to production and sound.

*I be missing me like
My shadow's on cp time
Whatchu see ain't what you get
Can't break this breath I breathe I*

*Been scuba diving through realities
Who you hiding, who you'd rather be*

*Why the heck you bringing
up my Kobe beef
Told you that when
I was drunk at seventeen
Don't you know it gets better
if you set it free
I was being paperback
You taught me that*



Kobe Beef - Forest Claudette

With each release, Claudette constructs a dynamic narrative of both their life and artistic journey. Unsurprisingly Claudette's dynamic sound, which many dub as nothing short of hypnotic, is a result of years of creative development and self-discovery.

Raised by a musical family in the Dandenong Ranges in Victoria, Australia, Claudette's high school years were spent perfecting their craft. After submitting a song to an annual high school music contest held by triple j, they earned an interview and a spin on the station, which soon landed them a record deal.

Our introduction to Claudette, the 2022 single (and *Atwood Editor's Pick*) "Creaming Soda," was spawned from the imposter syndrome they felt from entering the music industry at such a young age. These themes of self-doubt and loss further molded their debut EP *The Year of February* – a masterful display of sonic agility that cemented Claudette as an artist to watch.



Their subsequent EP *Everything Was Green*, which was released in 2023, earned Claudette two ARIA awards, including Best Soul / R&B Release for their self-described "ethical f**&boy's anthem," "Mess Around" with EARTHGANG. From here, Claudette's life has been a whirlwind. From headlining shows across Australia to performing at major festivals, their electric journey is a direct reflection of their art: energizing, engaging, and ever-expanding.

Their latest single only further builds upon this journey. Their latest single following a genre-bending cover of the Red Hot Chili Peppers' "Can't Stop," "Kobe Beef" is a soulfully layered melody that details Claudette's non-binary identity. A monumental progression in vulnerability, given this song marks the first creative interpretation of their queer experience, Claudette describes the project as an incredibly reflective experience.

*I'm cool with the automatic
Whipping to my mother planet
Cool with the damages I'm bound
to get from cameras flashing
Flew in on ruby slips
a little gift I got in Kansas
Jupiter never banished me*

*My ID been on thin ice
(Cracking I'm crying)
That skinny dip fit me right
(Fact is I'm flyin')*

*Fact is I'm finely
Done with fitting my genes
Fact is I'm wild
Fact is I'm free*



Forest Claudette © Lissyelle Laricchia

I'm really trying to come out from within... there's this character selection, and to me all those characters are a sort of fantasy. It's all these promises of different roles in society.

"'Kobe Beef' is the first song I've ever written about being non binary," Claudette shares.

"It's centered around the questions and conversations I had to have with myself before I could feel comfortable and safe to make this project. Like, 'Why share so much? Why expose yourself? Can't some things be private? Why is it so important to speak about?'"

The accompanying music video, directed by Quinn Cavin, provides a stunning visual showcase of fashion and aesthetics through which Claudette muses over and discovers his most honest, authentic self.

Atwood Magazine sat down with Forest Claudette to discuss their latest single and their dynamic creative process, as well as what's on the horizon.

*All this pretty cash look gas on me
But I don't really feel anything
I'm getting used to gasoline
I'm getting used to gasoline*

*I'm cool with the automatic
Whipping to my mother planet
Cool with the damages I'm bound
to get from cameras flashing
Flew in on ruby slips
a little gift I got in Kansas
Jupiter never banished me*